

Instruction Sheet

Follow these instructions to relocate the time delay relay vertically inside the control boxes.

Subject: FQG60/120-T Time Delay Relay Relocation Kit Instructions

Models affected: FQG60/120-T Fryers

09/10/2021

1. Disconnect the power from the fryer.

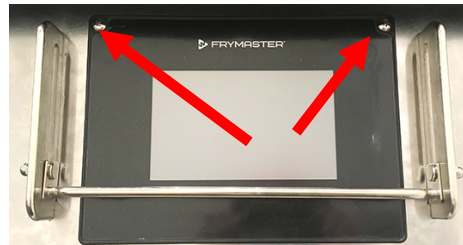


Figure 1

2. Remove the two Phillips head screws from the upper left and right corners of the controller (see Figure 1).



Figure 2

3. Loosen the acorn nuts on both ends of the guard (see Figure 2).
4. Slide the guard up to the top of the rails (see Figure 3).



Figure 3

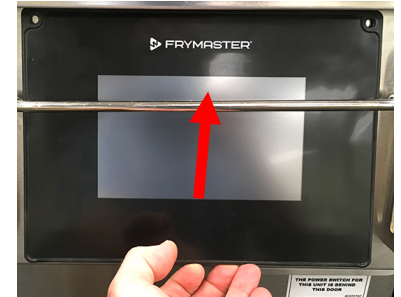


Figure 4

5. Slide the controller up to disengage it from the bezel (see Figure 4).



Figure 5

6. Lift the controller out from the bezel (see Figure 5).

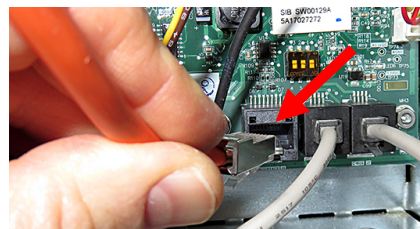


Figure 6

7. Disconnect the orange RJ45 controller cable from the SIB board (see Figure 6).

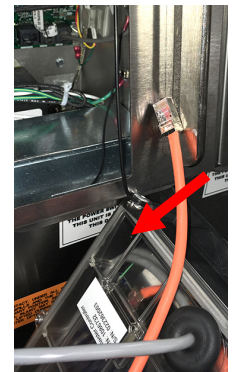


Figure 7

8. Lower the controller and rest it on the bottom of the control box (see Figure 7). The black tether on the right will support the controller.

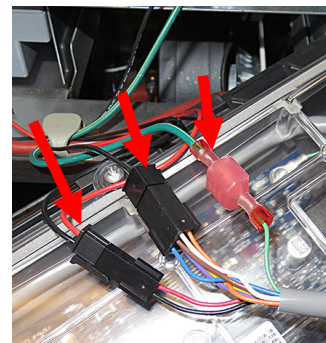


Figure 8

9. Locate and disconnect the current vat locator, speaker wire and ground wire from the rear of the controller (see Figure 8).

10. Disconnect the lanyard tether (see Figure 9).

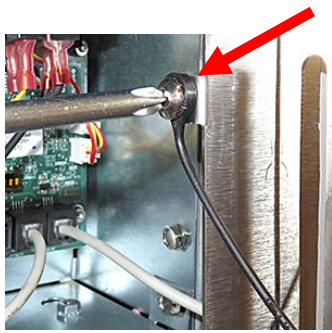


Figure 9

11. Remove the controller and set aside.

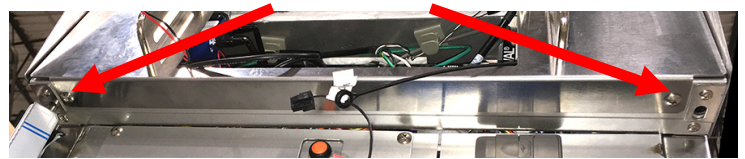


Figure 10

12. Remove the bezel by removing the two screws on the bottom of the bezel, starting with the screw closest to the door first, so the bezel can rest on the door (see Figure 10).

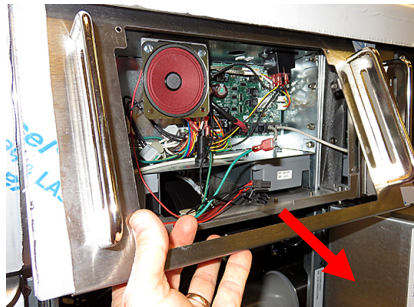


Figure 11

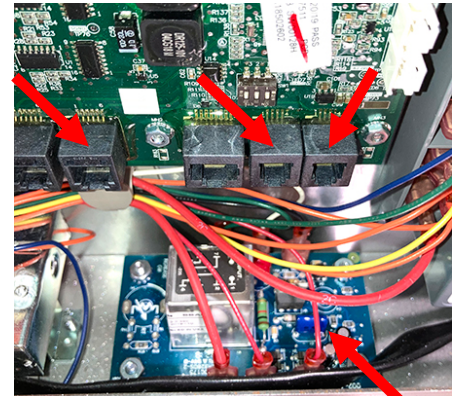


Figure 12

13. Remove by tilting the bezel up from the bottom and lower towards the front of the fryer (see Figure 11).

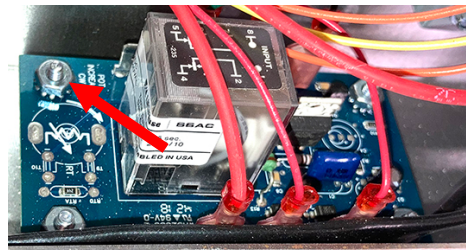


Figure 13



Figure 14

14. Disconnect the lower cables from the SIB board, to ease access to the time delay relay board, marking or making a note of the connectors to facilitate reconnection (see Figure 12).

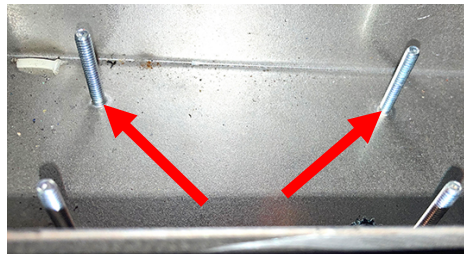


Figure 15

15. Remove the four (4) 5/16" nuts attaching the time delay relay board (see Figure 13). Retain the nuts to reattach the board.

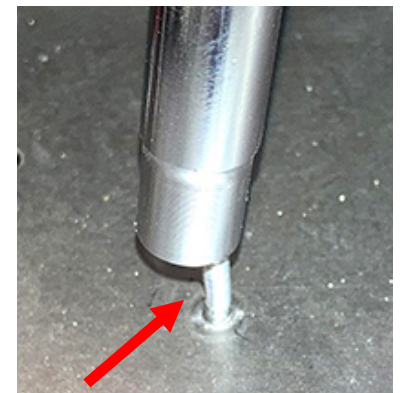


Figure 16

16. Remove the board off the studs and locate out of the way (see Figure 14).

17. Using a nut driver or other tool, break off two (2) studs closest to the rear of the control box (see Figures 15, 16 and 17).

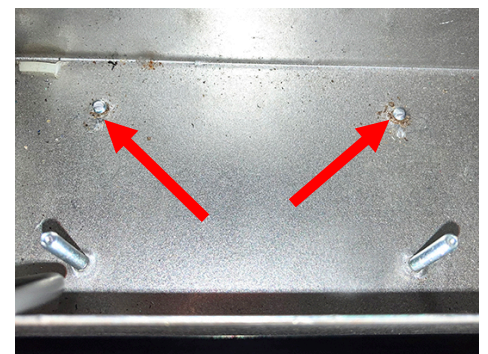


Figure 17

18. Slide the time delay relay board onto the studs of new bracket (see Figure 18).
19. Attach the board with 5/16" nuts from step 15.
20. Slide the bracket with the mounted board onto the two remaining studs from step 17 (see Figure 19). It may be necessary to relocate wires. Ensure the bracket doesn't pinch any wire harnesses.
21. Ensure the bracket is under the lower connections of the SIB board (see Figure 20).
22. Attach the bracket with 5/16" nuts.
23. Reverse steps to reassemble. Ensure when replacing the bezel, the tabs are inserted into the top slots (see Figure 21).
24. Reconnect power and test the function of the fryer.

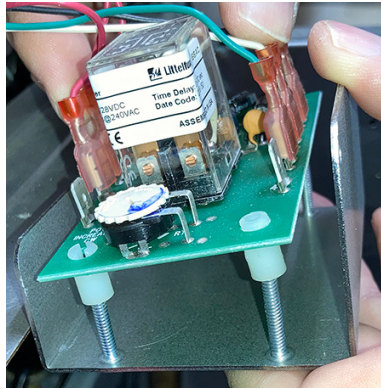


Figure 18

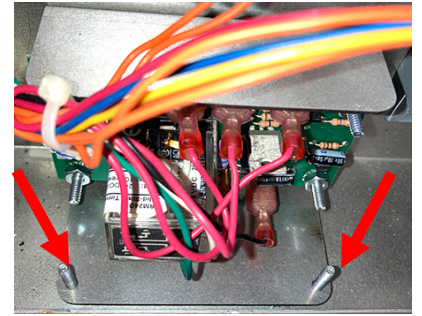


Figure 19

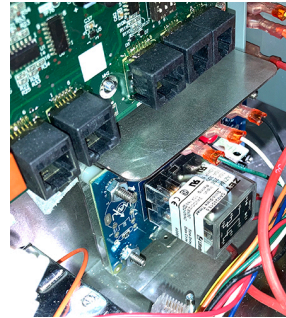


Figure 20

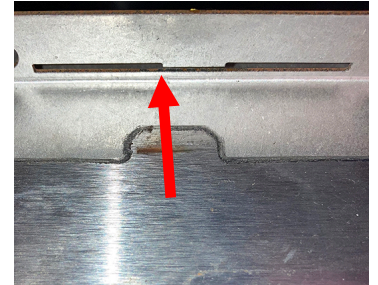


Figure 21